

# E-Duct Ventilator

Refer to product table below for applicable product codes covered by this document

Issue **A**

## Product Type & Application

Bradford Ventilation E-Duct (Exhaust Duct) is designed to allow the ventilation of sewer systems or water treatment tanks. The ventilator is designed for use in conjunction with Bradford Ventilation I-Duct (Inlet Duct) to provide replacement air.

## Compliance with the NCC

There are no relevant clauses within the NCC for this product to comply with.

## Evidence of Suitability

There are no relevant clauses within the NCC to show compliance with – refer to the Additional Data section of this PTS for other compliance data.

## Conditions of Storage, Use & Maintenance

- Store in the original packaging in a cool and dry area.
- Top load only – damage may be caused to ventilator by stacking other items on top of the packaging and/or ventilator.
- This product requires regular inspection and maintenance, which should be increased in frequency when used in harsh environments.
- Do not attempt to repair – contact Bradford Ventilation for service advice.

**Refer to the product warranty at [bradfordventilation.com.au](http://bradfordventilation.com.au) for more information.**

## Limitations of Use

- Do not use for exhausting hazardous, abrasive, acidic and alkaline vapour or areas containing explosive or corrosive materials.
- This product is not suitable for use in Bush Fire (BAL) or FZ rated areas.
- Products installed within 1,000m of breaking surf are recommended to be specified with (optional) polyolefin or powder coat finish for additional corrosion protection.
- Seek technical advice from Bradford Ventilation on application suitability if unsure.
- **IMPORTANT - Do Not Modify This Product:** Performance and safety are only achieved by the product or configuration listed in this PTS.

## Specific Design or Installation Instructions

- **Caution:** The turbine head of this product can rotate without warning (even during installation) – always keep body parts away from moving components.
- The rotating head of this product must be installed upright to ensure correct operation.
- Replacement outside air must be provided via evenly distributed openings or I-Duct positioned to facilitate crossflow ventilation and help the E-Duct to work more effectively and efficiently.
- This product may be used in moist or dusty applications in conjunction with a regular inspection and maintenance program.
- This product is suitable for installation onto suitable sized piping or tubing where a suitable seal can be achieved.

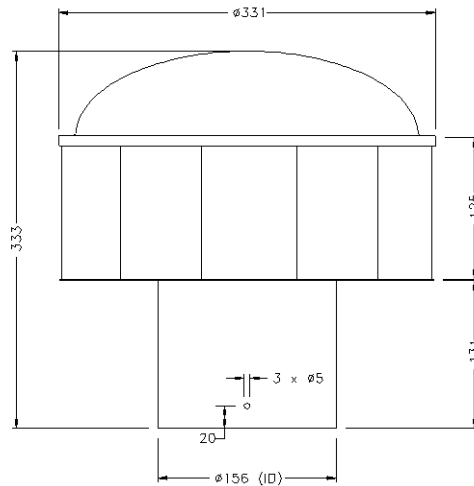
**For general installation guidance refer to the product installation guide at [www.bradfordventilation.com.au](http://www.bradfordventilation.com.au)**

## E-Duct Ventilator

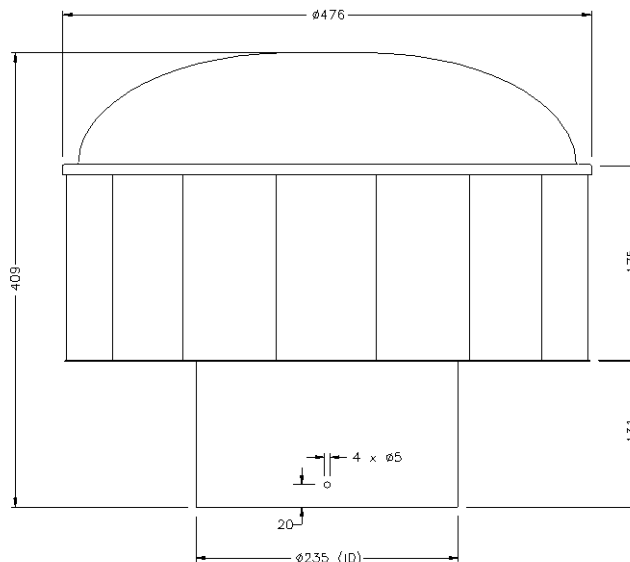
### Applicable Product Codes (SKU)

|        |        |        |        |
|--------|--------|--------|--------|
| Size   | 150mm  | 225mm  | 300mm  |
| Code   | 88592  | 88593  | 61419  |
| Weight | 2.3 kg | 4.3 kg | 4.5 kg |

### Product Dimensions - 150mm

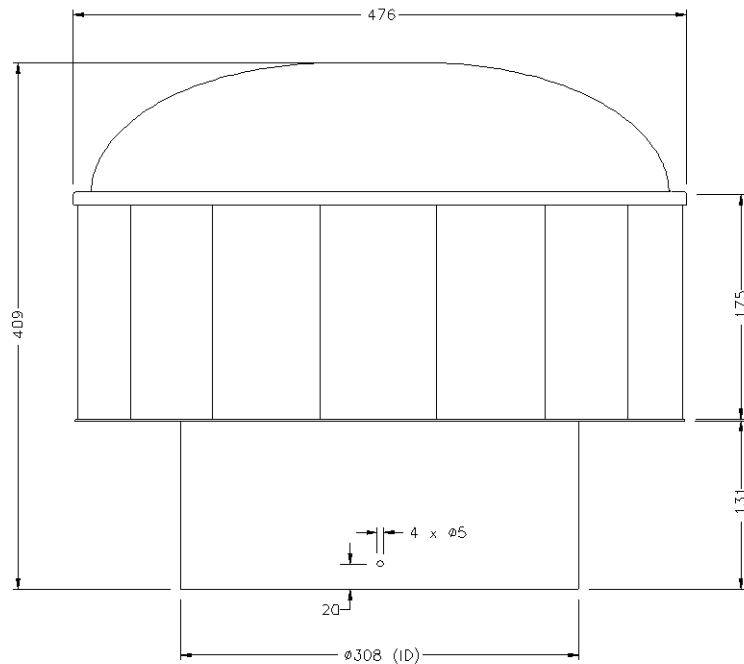


### Product Dimensions - 225mm



## E-Duct Ventilator

### Product Dimensions - 300mm



### Product Specification

| Component         | Material                         |
|-------------------|----------------------------------|
| Turbine           | Aluminium                        |
| Dome              | Aluminium                        |
| Bracket & Throat  | Stainless Steel                  |
| Shaft             | Stainless Steel                  |
| Bearing Holder    | Nylon Glass Filled               |
| Rivets and Screws | Stainless Steel                  |
| Finish            | Powder Coat – Inside and outside |